

ID	Op	Type Of Security	Security	Currency	Entry Date	Entry Price	Exit Date	Exit Price	ABS Return	BRO	Profit/Loss
609	Short	Equity	BARC	GBP	21 Jan	296	22 Jan	261	36	10	356.10

Security Profile

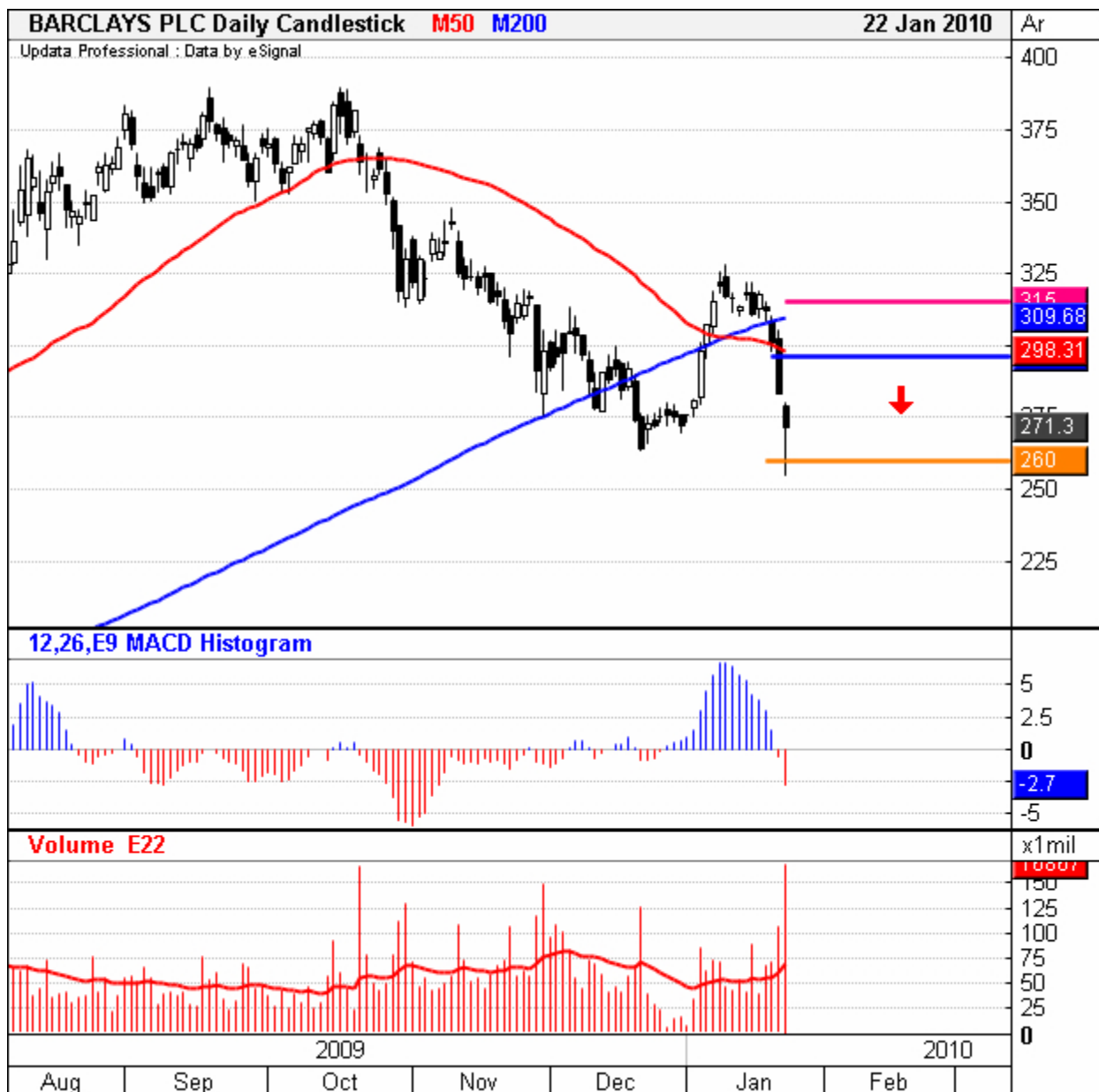
Barclays plc

Ticker: LSE: BARC

Market Cap: 34,331,660,000

25 January, 2010

We sent out a text alert to take profits on this position when the price was at 261p. It hit our target price of 260p soon after so we assume that most of you got that price. This position is now closed out with a nice swift profit.



22 January, 2010

Our stop entry order was triggered, we are now live on this trade.



21 January, 2010

Company Description:

Barclays PLC offers commercial and investment banking, insurance, financial, asset management and related services. The Company's banking subsidiaries operates branches in the United Kingdom and overseas. (Bloomberg)

Technical Analysis:

Barclays plc has recently seen its 50 day SMA break below its 200 day SMA which creates a technical sell signal dramatically known as the 'death cross'. It has also traded down the past two days on higher than average volume. On Wednesday the stock closed below its 50 day SMA and found support right on the 200 day SMA.

We are going to sell the stock should it break below its 200 day and the psychologically significant 300p level. We advise placing a stop entry sell order at 296p. We have a downside target of 260p on the trade and will set a protective stop loss order at 315p.

